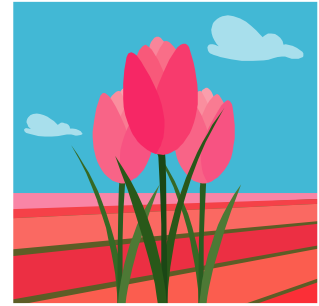


Roots & Shoots



Master Gardener
Society of
Oakland County, Inc.



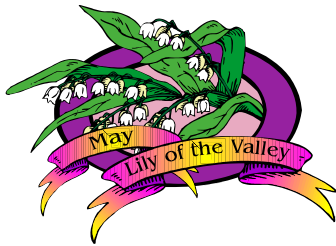
April – May 2013



April 23, 2013 @ 6:30pm
MGSOC General Society Meeting & Location
Telly's Greenhouse
3301 John R Rd., Troy, MI 48083

Speaker : George Papadelis
Education: "Ornamental Grasses"

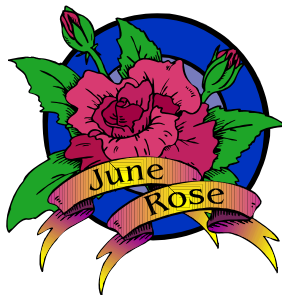
A business meeting will take place, prior to the start of our Educational Program.



May 14, 2013 @ 6:30pm
MGSOC General Society Meeting & Location
Beautiful Savior Lutheran Church
5631 North Adams Rd, Bloomfield Hills, MI 48304

Speaker : Todd Renshaw
Education: "The Art of Growing Bonsai"

A business meeting will take place, prior to the start of our Educational Program.



June 11, 2013 @ 6:30pm
MGSOC General Society Meeting & Location
Beautiful Savior Lutheran Church
5631 North Adams Rd, Bloomfield Hills, MI 48304

Speaker : Bob Williams
Education: "Practical Phragmites Control"

A business meeting will take place, prior to the start of our Educational Program.



Carol's Corner

Spring is finally upon us! Even though the temperature may not reflect it, my Witch Hazel is blooming and the daffodils are poking up. Now if my yard would dry out enough for me to get outside and rake the matted leaves out of the beds, cut back the perennials I left standing last Falls (for both winter interest and overwintering habitat for our native bees and other pollinators) and lastly, cut back some summer flowering shrubs, it would finally look like spring!

I hope you're all rested up and ready to jump into volunteering! We have sign-ups for Ask a MG program as well as the Farmers Markets almost ready to go. Watch the Oakland Gardener for details.

By now I hope you all have had a positive experience with the new Volunteer Management System (VMS). Some glitches still need to be worked out but once they are fixed and you're used to it, I think you'll really like it. We may try it for scheduling both Farmers Markets and Ask a Master Gardener this spring.

As we gear up for the volunteering season, especially information booths, I'd like to remind you of a few guidelines.

- 🌱 Wear your MG badge.
- 🌱 Do not make recommendations of specific companies. MSUE is non-biased and cannot be recommending one company over another company.
- 🌱 Do not recommend brand name pesticides. Saying the chemical name is fine. MSUE is non-biased and cannot be recommending one company's products over another company's product.
- 🌱 Stand up, walk around and approach people to see if they have any questions.
- 🌱 Be friendly
- 🌱 Please do not just sit and read a book or talk to your volunteer partner non-stop. This makes you unapproachable.

Important Information

Please Read

Volunteer Management System (VMS)

VMS Buddies

There are many questions on the new recertification fee, hours submissions, and Michigan Master Gardener Association (MMGA). If you are talking to other MG's and they are asking you questions about these items, please refer them to our MSUE Office for the answers. There is a lot of incorrect information being spread around and I'm depending on you to stop it by referring people to us!

Unfortunately the days of submitting paper volunteer/educational reports to our office are over. For those of you who don't have a computer and are not willing or able to go to the library to report your hours online, there is now a process to help you. It's called "VMS Buddies". This is someone who is willing to enter your

hours for you using your login and password. If you need a VMS Buddy or want to be a VMS Buddy, please contact Cathy Morris at 248-858-1639 or morrisc@oakgov.com.

The due date to pay the recertification fee is April 15, 2013.

Complete the 4 steps required for recertification before **April 15th**.

If you do not complete the 4 required steps (3 for trainees) by this due date, your certification status will be changed to Inactive.

If you have **not** already accessed the VMS, click on the link below which will give you one-time access into the VMS where you should *Edit Your Profile* to set up and save your password. Then proceed with completion of the 4 required recertification steps (3 for trainees).

<https://michigan.volunteersystem.org//UniversalLogin.cfm?uid=15&uuid=2826981ACFAC2A99F0A77D06F913FC>

Just a reminder that you will find links on the VMS homepage to a "Getting Started Guide" and a "VMS User Guide" which you can use to guide you through the recertification process and to become more familiar with the new system. If you have any trouble, contact Cathy Morris at 248-858-1639 or morrisc@oakgov.com.

To log in any time after your first time, go to: <https://michigan.volunteersystem.org> and use your email address and password to log in.

MMGA Fee

To pay the \$5 MMGA fee you can go to their website <http://mmgainc.org/Members.html>. You can click on subscribe to pay online or go to the bottom of the page and download the form to fill out and send a check. Please note that the checks are not sent to our MSUE Oakland County offices and the 2 fees cannot be combined in one check. Those of you who sent checks to our local office should be getting them back any day now.

Hours Submission for Recertification

The deadline for your volunteer and educational hours submissions remains the same December 31 deadline it has been for over 10 years. For MG Trainees the deadline for hours is one year from the end of class to achieve basic certification. After that date you revert to the December 31 deadline to recertify yearly.

The Year at a Glance—MGSOC Meetings/Events for 2013

April 20	MGSOC Conference	Elements of Design for Sustainable Landscapes	MSU Conference Center, Troy
April 23	George Papadelis	Ornamental Grasses	← At Telly's Greenhouse in Troy
May 14	Todd Renshaw	The Art of Growing Bonsai	
May 20		MGSOC Board Meeting	7PM @ Extension ofc.
June 11	Bob Williams	Practical Phragmites Control	
July 9	Janet Macunovich	Design Tips for Garden Art	
August 13	Alison MacKinder	Annuals and Combining Them With Perennials	
August 19		MGSOC Board Meeting	7PM @ Extension ofc.
September 10	Mike Sautter	Honeybees: What's All the Buzz About?	
October 8	Cathy and Frank Genovese	Christmas Tree and Spruce Declines	
October 21		MGSOC Board Meeting	7PM @ Extension ofc.
November 12	Trevor Newman	Edible Landscaping – From Consumers to Producers	
November 18		MGSOC Board Meeting	7PM @ Extension ofc.
December 10	Holiday Potluck		

Pond Construction



Scott Bates from Grass Roots Nursery in New Boston talked about pond construction and setting up a container water garden for our March meeting. Most of the education came from seeing the pictures of the progression from a tiny tub or plain back yard to a beautiful water feature, so as is frequently the case, reading this article is no substitute for experiencing the program firsthand.

The first thing you do to create a water feature after you make a design is dig a hole! Dirt from the hole is piled up to make a waterfall that should come toward the viewer. To overwinter fish and plants, the deepest part of the pond should be at least 30 inches, reaching that depth in a series of steps. To keep outside nutrient sources away from the water, don't make the pond in the lowest part of the yard and elevate the edge slightly. After the hole is complete, make sure there are no sharp stones or roots in the hole, and then use a felt liner under the heavy-duty waterproof liner. The liner is held in place by rocks around the edge with plants interspersed to soften the lines.

Pumps, skimmers and filters have to be commensurate with the size of the pond. A pond is a "power bird bath." If lumber is used to form the waterfall, it should be treated with creosote which stops the growth of bacteria. Limestone should not be used in construction of a pond because soaking in water eventually turns it to mush, and raises the pH of the water making it too alkaline for the plants and fish.

Scott told an amusing story about the fact that ponds bring in wildlife. A foraging mink has found the expensive fish in his pond quite tasty! Great blue herons can be discouraged with wires strung over the pond.

(As I write this on March 22nd, I just saw my first turkey vulture of the season. Spring truly is coming!)

Water lettuce can act as a biological filter to keep away algae. You can also add good bacteria which compete with algae for nutrients, but it takes 10-14 days to clear the water.

Scott spoke to us in March 2012 and covered more about the plants for a water garden. The article can be found in the April-May 2012 issue of Roots and Shoots.

—Submitted by Jean Gramlich

Organic Fertilizers And Soil Amendments

(Editor's note: This is a reprint from the April – May 2011 Roots & Shoots as the presentation had the same content.)

Dale White from Uncle Luke's Feed Store in Troy was our February speaker. Organic fertilizers and chemical fertilizers perform the same function for plants, but the delivery of nutrients and what they do for the soil is very different. Chemical fertilizers are in salt form, and the salts left behind in the soil are detrimental to microorganisms; organic fertilizers are soil conditioners and help the microorganisms thrive.

Dale produced a handout that summarizes the various natural sources of nitrogen, potassium and phosphorous and their advantages and disadvantages.

NITROGEN makes plants greener, taller and stronger. Alfalfa meal is a good source, and it contains a growth hormone (plants on steroids). It contains potassium and phosphorous as well as micro-

nutrients because its deep root system brings up nutrients from the subsoil. It encourages microbial activity in the soil. Cottonseed meal is very similar to alfalfa meal but is more acidic. Blood meal is very soluble and quick acting and tends to be a deer repellent. Cocoa shells are mostly used as mulch. They are high in organic matter but are toxic to pets and tend to get moldy when wet.

Corn gluten is also a source of nitrogen but has the added attribute of being a pre-emergent herbicide and inhibiting fungal and bacterial growth. It is effective against many weeds in lawns. Dale recommends the following application schedule: 1) late March to April 15, 2) June 15 to July 4. It should not be used in butterfly gardens because it impedes the growth of larvae.

Liquid fish #1 is like organic Miracle-Gro and acts as a deer and rabbit repellent. It can be used full strength monthly or ¼ strength weekly. It can be used as transplanting water and as foliar fertilizer. I find it useful for seedlings started indoors. Caveat: it may attract raccoons that dig up the soil (and your plants) trying to find the fish. Liquid fish #3 is a mixture of fish emulsion and liquid seaweed. It has an abundant supply of growth hormones, vitamins, enzymes, carbohydrates and lots of trace minerals. It is a good stress reducer and therefore is used for transplants. Fertrell Starter is a liquid fish preparation that can be used in sprayers and drip irrigation systems. It is used as plant starter and on the members of the nightshade family after first flowering to increase crop yield. Fish meal can be worked into the soil before planting and releases its nutrients over a long period through microbial activity in the soil.

POTASSIUM is a necessary nutrient especially for root development. Greensand loosens clay soil and helps to release other nutrients in the soil. Dale recommends a good dose for the first year, then a dusting each year afterward. It holds moisture well and contains many trace minerals and is especially good for dahlias. Granite dust is another source of potassium, but it is often not available. Azomite and Redmond Mineral contain many trace elements and are often put in the planting hole for the nightshade family. Liquid kelp is a biostimulant, root system developer and contains many micro-nutrients. Kelp meal contains all the nutrients from A to Z, conditions the soil, builds soil life, stimulates root development and plant growth as well as retaining moisture in the soil. It increases crop yields. Because it is not water soluble, it has to be released to the plants by microbial activity and takes about 2 weeks to become available to the plants.

PHOSPHOROUS sources like black and white phosphate rock are not always available. Phostrell and bone meal are used to correct deficiencies in calcium and phosphate.

BLENDS are combinations of the fertilizers above. Gold Special Starter (Fertrell) is used as a “pop-up” fertilizer because it speeds germination and promotes rapid and vigorous growth. Holly Care (Fertrell) has a high level of phosphoric acid needed by acid-loving plants. Nitrell (Fertrell) is used as a general-purpose fertilizer for lawns, shrubs and trees. Super Lawn and Garden (Fertrell) is a general-purpose fertilizer formulated to activate microbial life and root growth. Super N is a multi-purpose plant food. Groganic, granulated chicken manure, is all-purpose and stimulates biological life that digests thatch in the lawn.

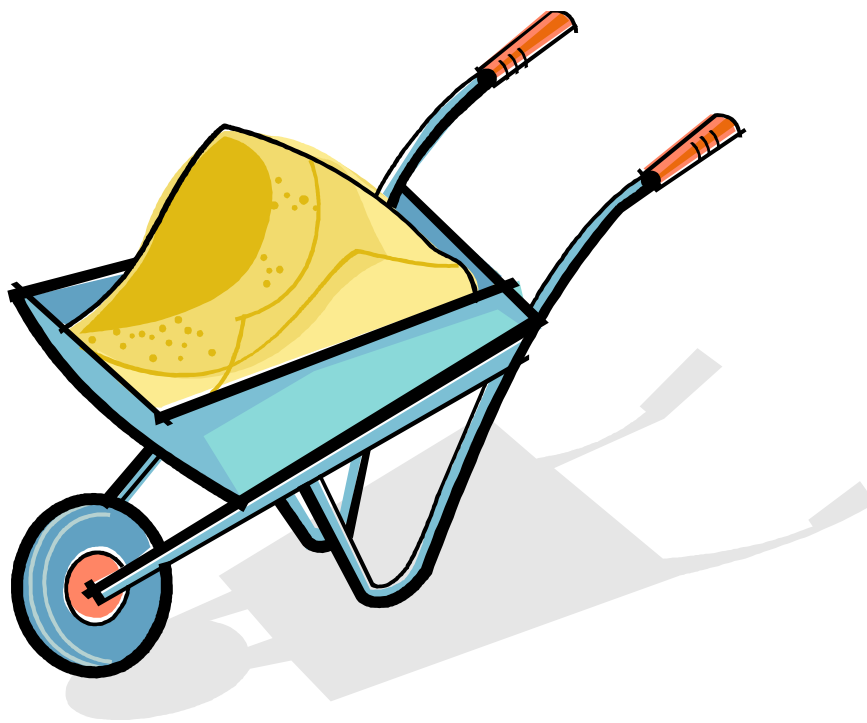
SPECIALTY ORGANIC PRODUCTS are used to control various pests or condition the soil. Pesticides that are approved by the Organic Material Review Institute (OMRI) can be used by organic farmers. Diatomaceous earth is used against slugs and other soft-bodied bugs (bed bugs?). Sluggo is

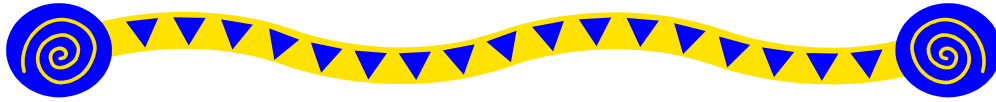
OMRI approved and should be put down before slugs hatch in March. Castor bean repellents are used for moles, skunks and raccoons. A mixture of boric acid and sugar repels ants. Insecticidal soaps are effective but should not be used in the heat of the day. Products containing Neem should be used against fungus and bacteria before the problems emerge (one to three applications 2-3 weeks apart before the end of May). The herbicide glyphosate is biodegradable. Animal repellents are made of various herbs, blood, garlic and eggs. Some are water soluble and wash off in the rain, so read the label carefully. Many people use grub killers to get rid of moles, but the net result is that the moles work harder to find food (therefore making more underground trails and holes) and eat more earthworms. Dale recommends “gummy grubs” that poison the moles right in their holes.

Greenleaf compound is used for acidifying and conditioning the soil. Pine bark improves clay and sandy soils. Mycorrhizae added to the soil cause phenomenal root set in new plantings.

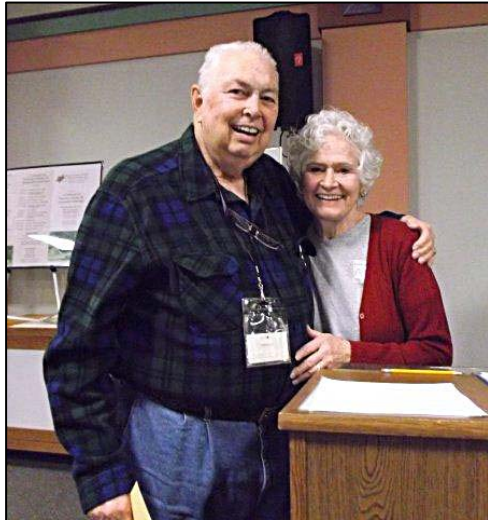
HOMEMADE CONCOCTIONS are simple to make and use. 5-10 pounds of manure in 10 gallons of water aged for several weeks makes a great soil enhancer. ½ teaspoon of Epsom salts mixed with one gallon of water can be sprayed on the plants leaves and on the ground around plants. Rose fertilizer is made with 1 cup of alfalfa meal and 2 tablespoons of Epsom salts. Use ½ cup per rose, rake in and water.

—Submitted by Jean Gramlich





On January 8, 2013, Susan Tatus-McLarty was presented The Sylvia Schult Award. This award recognizes an MGSOC volunteers' dedication and achievement in serving the society and its goals in 2012. Congratulations Susan!



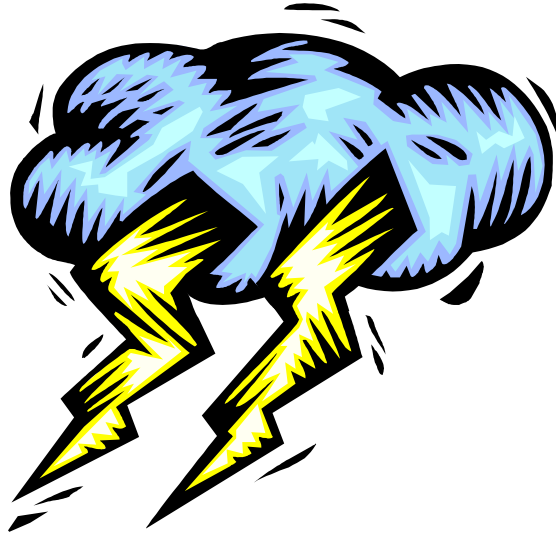
Tom Hershberger, past President of Master Gardener Society of Oakland County, retired at the end of January, 2013. In February, the new President, Margy Truza, presented Tom with a certificate to the 1st Annual MGSOC, Inc. Conference, taking place April 20, 2013.



Induction of the 2013 MGSOC Board - February 12, 2013
 Introduction by Carol Lenchek, Advisor
 Margy Truza - President. Jean Gramlich - Treasurer, Ruth Vrbenski - Secretary



MGSOC Board Members and Team Leaders for 2013
 Top Row L to R - Dick Wanat-Roots & Shoots Editor; Peggy Wanat-Web Site Calendar;
 Ruth Vrbenski-Secretary; Chris Covell-Education Chairman; Marianne Cotter-Bowers Farm;
 Charles Seitz-Hospitality; Sandie Parrott-Trips & Tours
 Middle Row L to R - Carol Lenchek-Advisor; Janie Grissom-Door Prize Coordinator; Nancy Schmid-
 Corresponding Secretary; Sally Teague-Hospitality Greeter; Lavon Cook-Membership
 Bottom Row L to R - Denise Brown-Project Support; Betty Peters-Program Chairman;
 Margy Truza-President; Jean Gramlich-Treasurer
 Not in picture: Carole Carroll-Hospitality Greeter; Sheri Trout-Webmaster.



In case of severe inclement weather such as snow, ice, hail, rain, strong winds, flooding , tornado watch or other natural calamity this procedure is to be initiated in order to cancel a preset meeting for the Master Gardener Society Oakland County members.

- The President shall contact the Society Executive Board (SEB)
- Determination of cancellation made
- President contacts the following:
 - Master Gardener Coordinator (Carol Lenchek 248.858.0900) OR
Linda Smith 248.858.0887
 - Communications Team (Dick and Peggy Wanat)
 - Project Support Team Leader (Denise Brown)
 - Church Door Poster (Margy Truza)
 - Program Team Leader (DeeAnn Bauer)

The Master Gardener Coordinator leave a phone message notifying callers of the meeting cancellation.

The Communications Team will post cancellation notice on Facebook and MGSOC Website www.mgsoc.org

The Project Support Team Leader will issue an email Blast notice of cancellation.

The Church Door Poster will place a notice on the door at Beautiful Savior Lutheran Church.

The Vice President will notify the appropriate personnel at BSLC of the meeting cancellation.

The Program team will notify speaker of cancellation and advise President re: ramifications if any.

Those Society members who do not have email or who come directly from work need to verify meeting status by phoning the Master Gardener Coordinator and listening to the phone message. This procedure should be completed no later than 3 p.m. of set meeting day.

Some Information You Should Know

MGSOC Board Members

President: Margy Truza.....(248)644-3560

Vice President: { Position Open }

Secretary: Ruth Vrbenski.....(248)969-6904

Treasurer: Jean Gramlich(810)714-2343

Team Administrator: { Position Open }

MSU Extension Oakland County Coordinator

Advisor: Carol Lenchek (248)858-0900

lenchekc@oakgov.com

Team Coordinators

Bowers Farm: Marianne Cotter.....(248)393-0068

Project Support: Denise Brown (248)640-5977

Hospitality: Charles Seitz.....(248)496-1590

Hospitality Greeter: Carole Carroll.....(248)321-8669

& Sally Teague.....(248)546-0280

Membership: Lavon Cook.....(248)939-7047

Programs: Betty Peters.....(248)651-8374

Door prize Coordinator: Janie Grissom....(248)887-6096

Trips & Tours: Sandie Parrott(248)394-1532

Corresponding Secretary: Margy Truza....(248)644-3560

Roots & Shoots Editor: Dick Wanat.....(248)644-5699

Web Site Address: www.mgsoc.org

Webmaster: Sheri Trout sheri@oaklandweb.com

Web Site Calendar: Peggy Wanat pwanat43@comcast.net

**Currently Available Opportunities: Communications,
Education, Project Support, Volunteer Activities**

Mission Statement

It is the Master Gardener Society of Oakland County's Mission to assist, enable, and encourage its members to use their horticultural knowledge and experience to help the people of their communities, enrich their lives through gardening and good gardening practices.

Michigan State University Extension- Oakland County
“Bringing Knowledge to Life”

North Office Building, #26 East
1200 N. Telegraph Road
Pontiac, MI 48341
Office Hours: M- F 8:30 a.m.-5:00 p.m.

Marie Ruemenapp
248-380-9100 or 248-858-0885
MSU Extension District Coordinator
Email: ruemenap@msu.edu

Charlene Molnar...248-858-0902
Horticulture Advisor
Plant & Pest Hotline
Hours of operation vary seasonally

Robin Danto...248-858-0904
Extension Educator~Food Safety
Email: dantor@oakgov.com

Tom Schneider...248-858-0905
Extension Educator~4-H Youth Programs
Email: schneidert@oakgov.com

Carol Lenchek...248-858-0900
Extension Educator~Master Gardener Program
Email: lenchekc@oakgov.com

Linda Smith...248-858-0887
Horticulture Office Assistant
Email: smithlin@oakgov.com

Cathy Morris...248-858-1639
*Clerk & Contact for Certification of Volunteer
& Education Hours*
Email: morrisc@oakgov.com

Bindu Bhakta...248-858-5198
Extension Educator~Water Quality
Email: bhaktabi@msu.edu

Saneya Hamler...248-452-9726
Extension Educator~Children, Youth & Family
Email: hamlersa@msu.edu

Eva Poole...248-858-1993
Extension Educator~Children, Youth & Family
Email: ander204@msu.edu

Roots & Shoots is a joint publication of MSU Extension-Oakland county and Master Gardener Society of Oakland County. Submit articles for publication to Dick Wanat rwanat155056mi@comcast.net by suggested deadlines below.

January 15 for February/March issue
May 15 for June/July issue
September 15 for October/November issue

March 15 for April/May issue
July 15 for August/September issue
November 15 for December/January issue

To help reduce mailing expenses, if you have Internet access we encourage you to read Roots & Shoots online at the Master Gardener Society website www.mgsoc.org.

MICHIGAN STATE
UNIVERSITY
EXTENSION



MSU is an affirmative action/equal opportunity employer. Michigan State University Extension programs and materials are available to all without regard to race, color, national origin, gender, gender identity, religion, age, height, weight, disability, political beliefs, sexual orientation, marital status, family status or veteran status.